

FILTER ELEMENT

**ADVANCED
TECHNOLOGY FOR
MAXIMUM SAFETY
AND EFFICIENCY OF
HYDRAULIC CIRCUITS**



PASSION T PERFORM

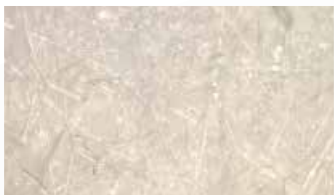


TYPES OF FILTER ELEMENTS

MP Filtri offers different solutions, according to specific filtration needs

A

MICROFIBER



State of the art hydraulic filtration, guaranteeing the best performance. Also available in the zerospark® (antistatic) configuration.



WA

WATER ABSORBER



Used in combination with microfiber to absorb free water in hydraulic oils



P

PAPER

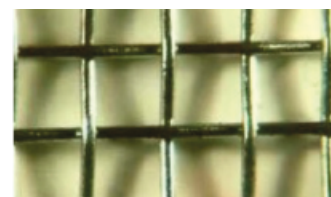


Smart solution for applications where high filtration efficiencies are not required.



R

WIRE MESH



Used for heavy-duty applications in terms of mechanical strength and temperature. Used in suction filters to minimize pressure drop.



THE CONCEPT

PET layer for external protection of the filter element assembly during installation and service. The design ensures an effective open area for maximum flow capacity. Customer-specific logo adaptations are possible.

Enhanced protection of the element assembly from differential pressures is provided by the perforated inner support tube ensuring the integrity of the filter element pleat pack therefore preventing its collapse.

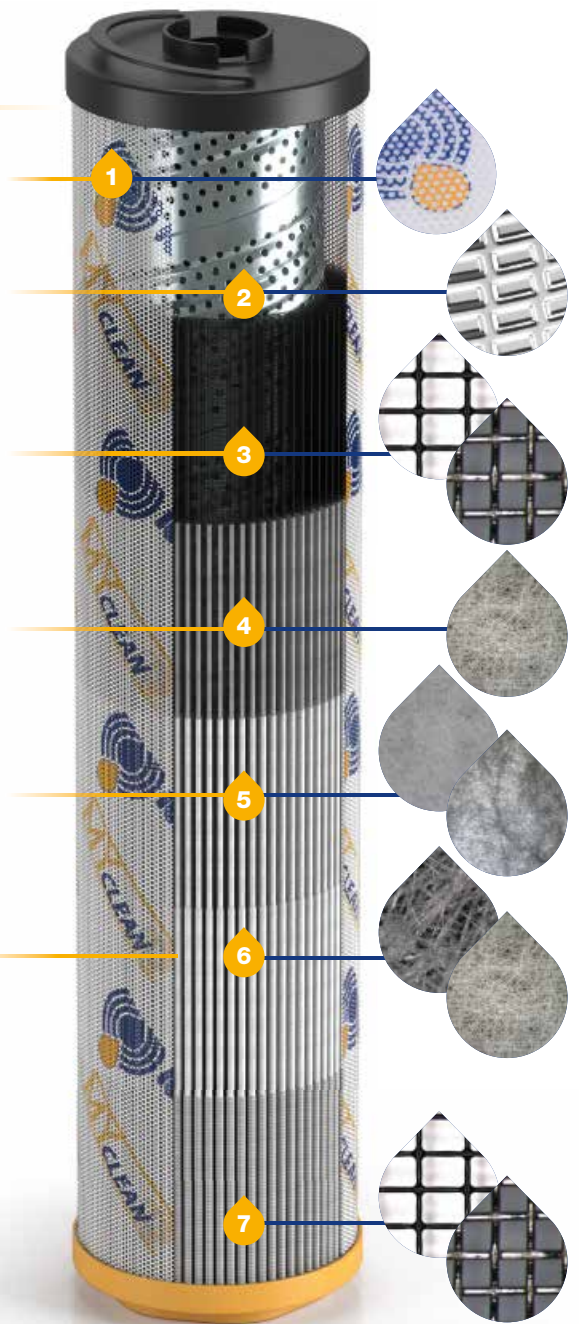
Metal mesh for internal support of the filter medias to maintain the integrity of the overall element pack. The mesh is available in stainless steel, or carbon steel with epoxy resin coating.

Polyester downstream layer support for protection of the filter media pleat structure.

Primary microfiber filtration 1000 beta efficiency for ultra-fine and fine applications ensuring maximum dirt holding capacity combined with low pressure drop characteristics.

External pre-filtration layer made of synthetic fibres available in two types:

- polyester material for protection of filter medias manufactured in microfiber;
- microfiber material for elements retaining large size solid particulates.



External metal mesh support for protection of the filtration medias from flow and pressure fluctuations and also to protect the integrity of the element's pleated structure.



X THE SOLUTION WITH POLYGONAL CONNECTION AND DEDICATED SEAL



BASE ENDCAP

SPIRAL TUBE

FILTER MEDIA

SPIGOT ENDCAP



Brochure
MyClean
& zerospark®

zerospark®

Z THE ANTISTATIC SOLUTION TO ELIMINATE THE PROBLEM OF ELECTROSTATIC DISCHARGES IN HYDRAULIC FILTERS

GUARANTEED PERFORMANCE

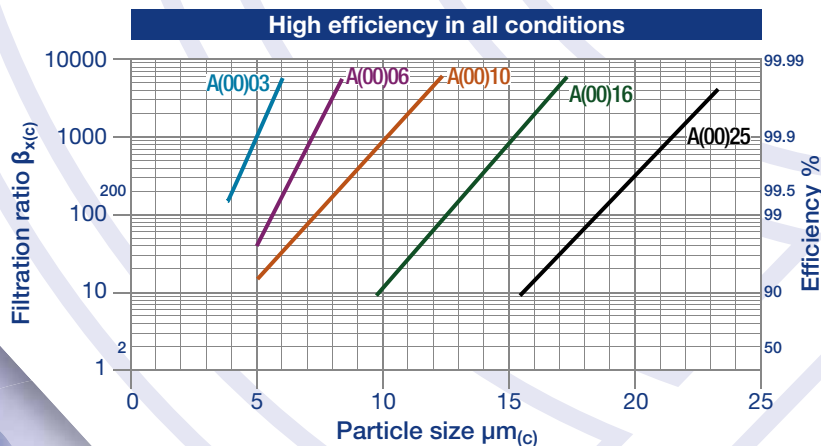
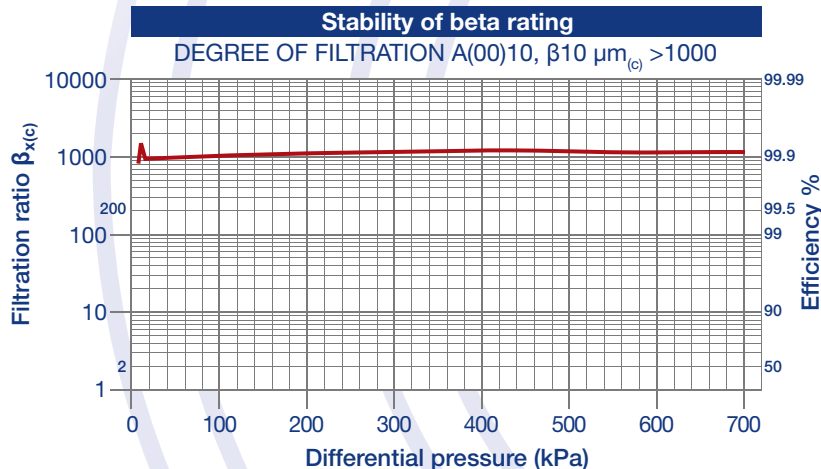
MULTI-PASS ISO 16889

The ISO Multipass test evaluates the characteristics (or performance) of a filter element, providing data on efficiency and capacity.

ISO standard filtration compared

$\beta_{x(c)} > 1000$ ISO 16889	Filter media code MP Filtri
$5 \mu_{m(c)}$	A(00)03
$7 \mu_{m(c)}$	A(00)06
$10 \mu_{m(c)}$	A(00)10
$16 \mu_{m(c)}$	A(00)16
$21 \mu_{m(c)}$	A(00)25

$$\frac{\text{Upstream particles number} > X \mu_{m(c)}}{\text{Downstream particles number} > X \mu_{m(c)}} = \beta_{x(c)}$$



LABORATORY

Laboratory
MP Filtri c/o HQ, Italy



ISO... We follow ISO standards to the letter to guarantee you only the best in our products!

At MP Filtri, we are constantly engaged in research, development and innovation. R&D teams use state-of-the-art test benches to certify the performance and function of filters and filter elements, while detailed technical analysis reveals the level of solid particle contamination in the tested oils.

Our R&D center includes:

- 15 test benches
- 8 instruments for analyzing oil contamination
- 13 tests in accordance with ISO standards
- 36 different types of tests and over 1000 tests per year
- Specialized training areas
- Comfortable meeting rooms and study areas
- Customer training courses that alternate theoretical frameworks to practical experimentation on test benches



CHOOSE OUR FILTER ELEMENTS IT'S SIMPLE



FAMILY ELEMENT FILTER	TYPE	MATERIAL SPIGOT ENDCAP	MATERIAL SEALS	BYPASS CALIBRATION +/-10%	FLOW RATE MAX single filter element	WORKING TEMPERATURE (°C) --- (°F)	FILTRATION DEGREE (µm)	Δp COLLAPSE (bar/psi)	FILTER FAMILY TYPES							
									SUCTION	RETURN	RETURN / SUCTION	SPIN-ON	LOW-MEDIUM PRESS.	HIGH PRESS.	STAINLESS STEEL	ATEX
MICROFIBER RETURN	A	Polyamide	NBR FPM MFQ	1.75 ÷ 4.5 bar 25 ÷ 65 psi	3,169 l/min 837 gpm	-25 ÷ +110 --- -13 ÷ +166	3 6 10 15 25	10/145 8/116 (RFEX) 5/72 (Spin-On)	-	√	√	√	-	-	-	-
MICROFIBER IN-LINE	A	Polyamide	NBR FPM MFQ	N.A. included in the head of the filter 3.5	1,993 l/min 526 gpm	-25 ÷ +110 --- -13 ÷ +166	3 6 10 15 25	20/290 8/116 (LFEX) 5/72 (Spin-On)	-	-	-	√	√	-	-	-
MICROFIBER HIGH PRESSURE	A	Polyamide Steel	NBR FPM MFQ	N.A. included in the head of the filter 6.0	569 l/min 150 gpm	-25 ÷ +110 --- -13 ÷ +166	3 6 10 15 25	210/3045 20/290	-	-	-	-	-	√	-	√
MICROFIBER HIGH PRESSURE STAINLESS STEEL	A	Polyamide Steel Stainless steel	NBR FPM MFQ	N.A. included in the head of the filter 6.0	160 l/min 42 gpm	-50 ÷ +120 --- -58 ÷ +248 depending on the seal	3 6 10 15 25	210/3045 20/290	-	-	-	-	-	-	√	√
MICROFIBER WATER REMOVAL	WA	Polyamide Steel	NBR FPM	N.A. included in the head of the filters 3.0 and 3.5	895 l/min 236 gpm	-25 ÷ +110 --- -13 ÷ +166	25	20/290 10/145 8/116 (RFEX)	-	√	-	-	√	-	-	-
PAPER	P	Polyamide Steel	NBR FPM	1.75 ÷ 4.5 bar 25 ÷ 65 psi	3,378 l/min 892 gpm	-25 ÷ +110 --- -13 ÷ +166	10 25	10/145 8/116 5/72 (Spin-On)	√	√	√	√	-	-	-	-
PAPER REINFORCED	R	Polyamide	NBR FPM	N.A. included in the head of the filter 3.5	727 l/min 192 gpm	-25 ÷ +110 --- -13 ÷ +166	10 25	20/2/0	-	-	-	-	√	-	-	-
WIRE MESH	M	Polyamide Steel	NBR FPM	0.3 ÷ 4.5 bar 4 ÷ 65 psi included in the head of the filter 6.0	3,517 l/min 929 gpm	-25 ÷ +110 --- -13 ÷ +166	25 60 90 250	210/3045 20/290 10/145 8/116 (Elixir) 5/72 (Spin-On)	√	√	√	√	√	√	√	√

NBR = Nitrile / FPM = Fluoroelastomer / MFQ = Fluorosilicone



WORLDWIDE NETWORK

CANADA ♦ CHINA ♦ FRANCE ♦ GERMANY ♦ INDIA ♦ SINGAPORE
UNITED ARAB EMIRATES ♦ UNITED KINGDOM ♦ USA



HQ
ITALY



PASSION  PERFORM

in @ y f



mpfiltri.com

MP Filtri reserves the right to make modifications to the models and versions of the described products at any time for both technical and/or commercial reasons. For updated information please visit our website: www.mpfiltri.com. The colors and the pictures of the products are purely indicative. Any reproduction, partial or total, of this document is strictly forbidden. All rights are strictly reserved.

MF002000077
US - 2024.07